

NOTE: GAS STUB-OUT IN ATTIC FOR HEAT.

NOTE: WINDOW HEADER HEIGHT SET AT 7'-11" @ FIRST FLOOR ONLY

NOTE: ALL INTERIOR DOORS & PATIO DOOR TO BE 8' TALL

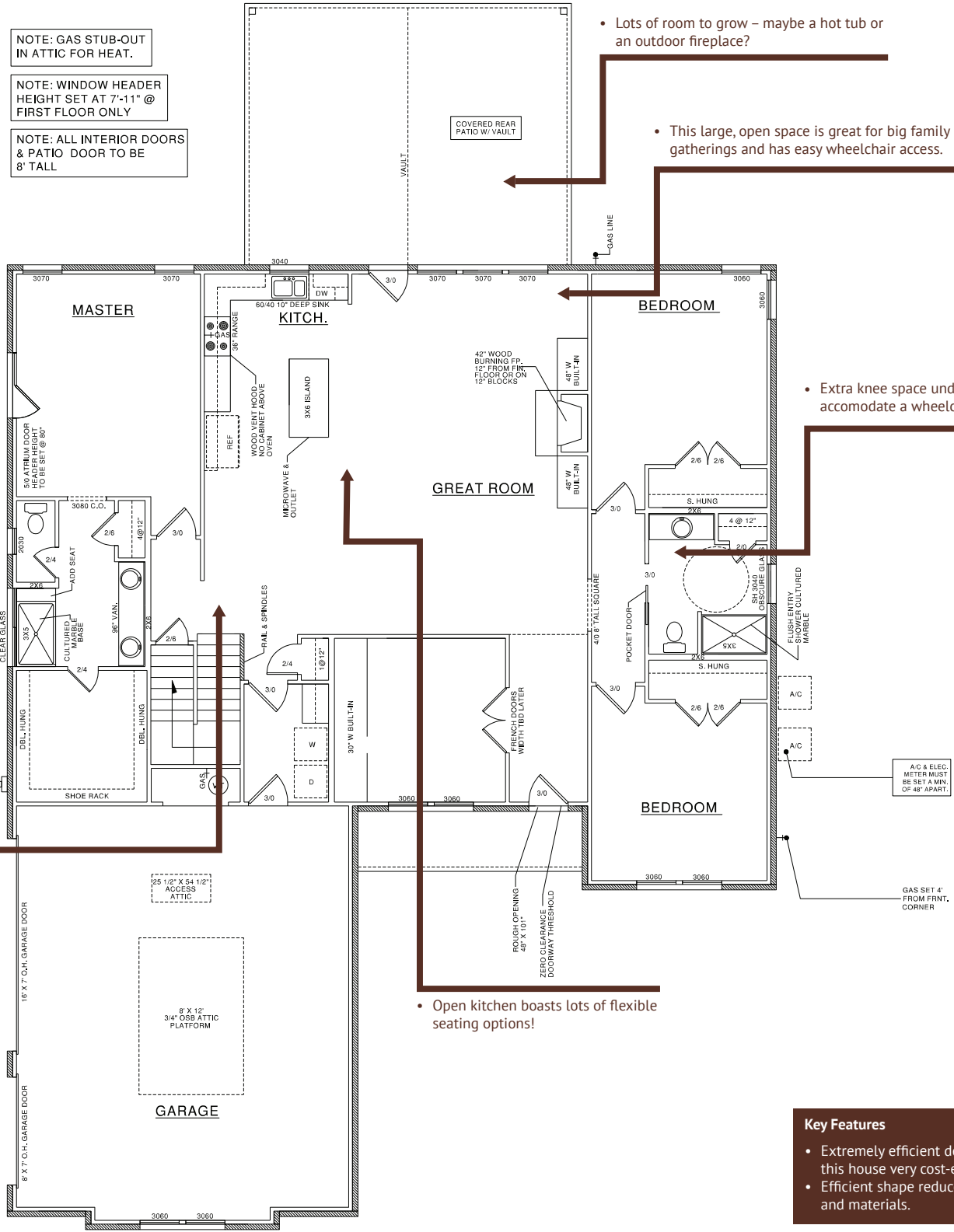
• Lots of room to grow – maybe a hot tub or an outdoor fireplace?

• This large, open space is great for big family gatherings and has easy wheelchair access.

• Extra knee space under the vanity to accommodate a wheelchair.

• Open spaces facilitate wheelchair access

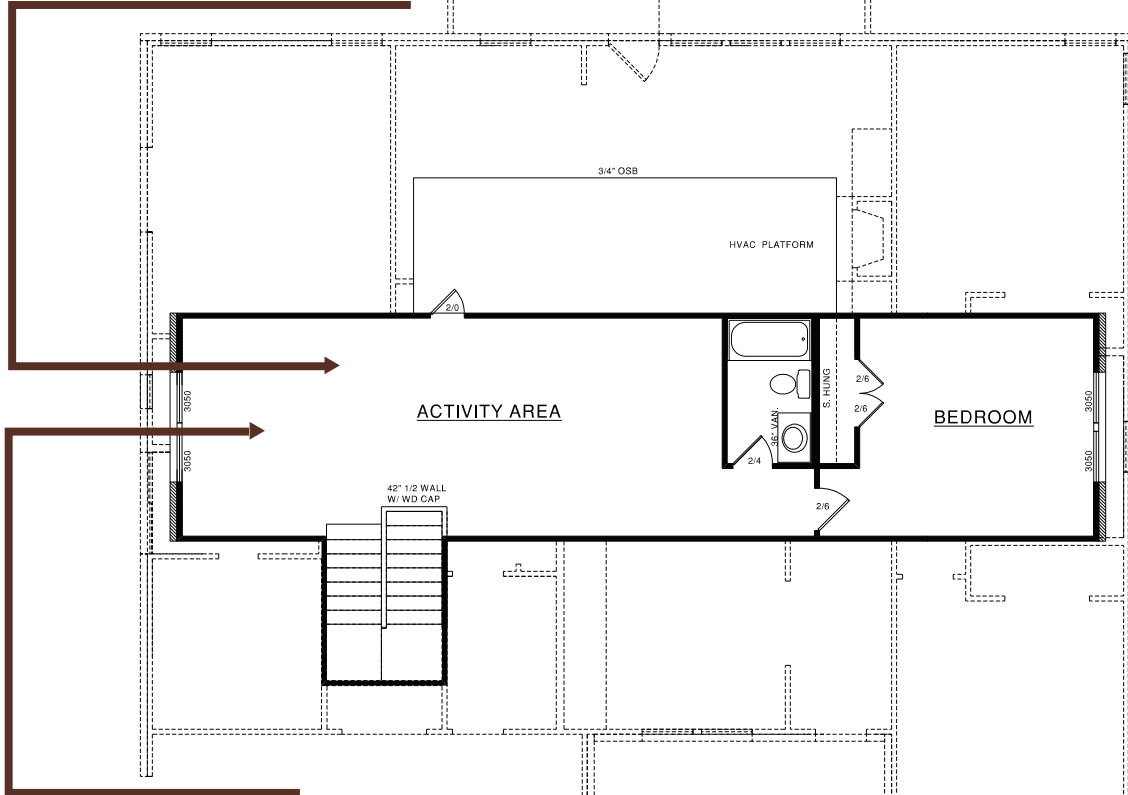
• Open kitchen boasts lots of flexible seating options!



Key Features

- Extremely efficient design makes this house very cost-effective.
- Efficient shape reduces wasted space and materials.

- Great hang-out spot (and potential man cave!)



- This custom add-on makes a great use of the available space!

Key Features

- This space utilizes area that's already under the roof. An efficient shape means this family got a lot of bang for their buck!